

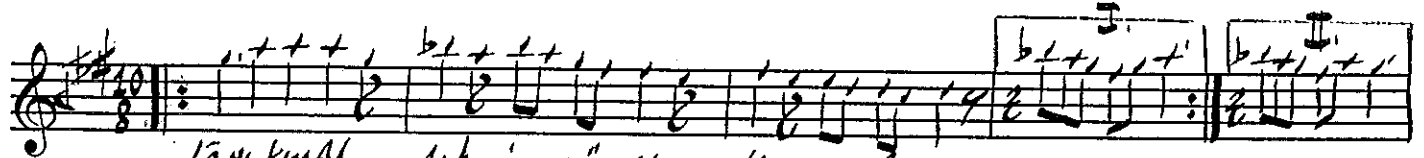
Usûl: Cür'una

Bayâtî: ARABÂN / SAKI

Güfte: Seref Hanım  
Berce: Neger, Sabar Ké, Ke!

479

YHCEI / MURIK

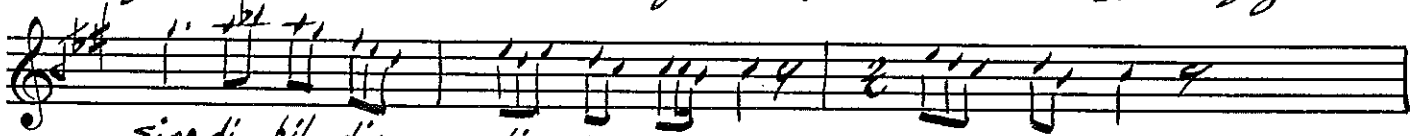


Lâyi kimal lah i şün ey le ce fâ  
Binnü vâ zî? le dü zül mez bad ez in

— sar — — sar —

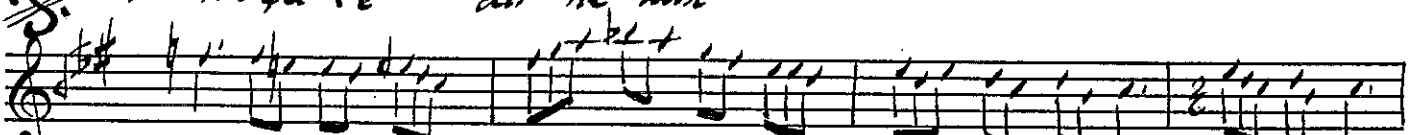


Öl dü rür sen gayre it men is ti kâ Haddü kad rür  
Yık dın â bâ dano lan gön lüm he min Sabri gay ri



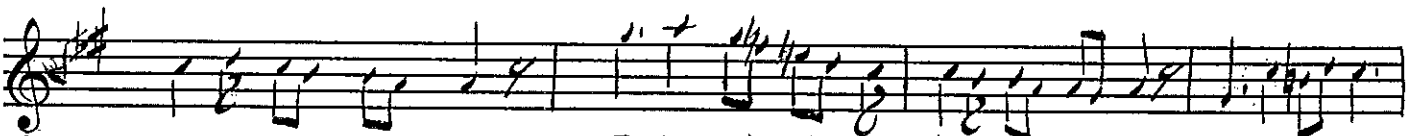
siardi bil dir dın ba na  
ba na şa re dir he min

— sar —



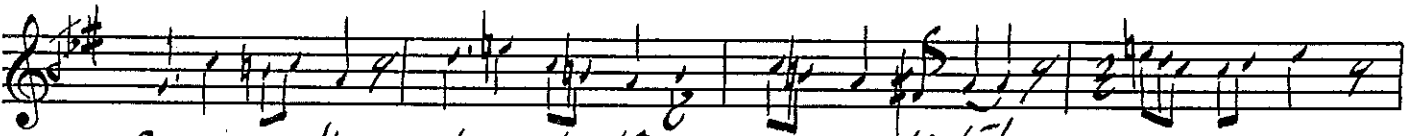
Der di men dın a ki bet ey bi ve fâ

— sar —



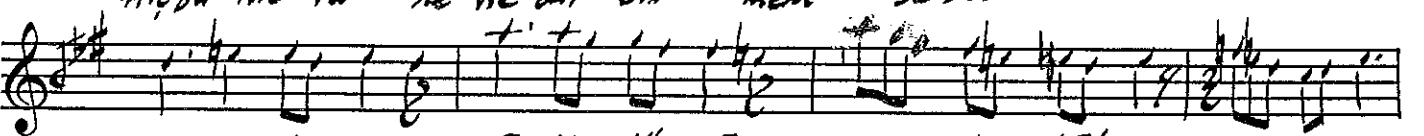
Hâ ti ri ağ yâri şün it tin fe dâ

— sar —



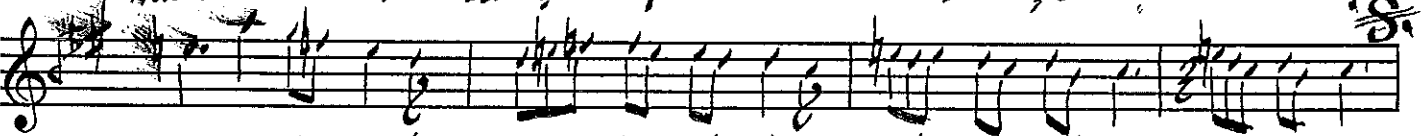
Ba na may lin kalma du bi is ti bân  
Hiçbu hiç râ ne ne dir bil men se beb

— sar —



Gay ri ol sun hâ ti düs vâ rim te bân  
Has bi hal it dın şe ref le de bu şeb

— sar —



An la dım val lâ hi bil dım ah ah  
Ad det en li mü rûv set mi a ceb

— sar —

